

# SilenTrac

## PROGRAMMING GUIDE

## SETUP WITH THE BRIDGE AND APP

### 1. Download the App

Download the MyCurtains App from the google play store (for Android) or the App Store (for Apple devices). Click “Register Account” to create user account. Open, app and select add bridge.

### 2. Name your Bridge

Proceed to name your Bridge (make sure that your location services on your phone are enable and permissions have been granted to the Mycurtains app.)

### 3. Connect Power to Bridge

Find an outlet in a location central to the drapery you are installing in the home. Insert the micro-usb end of the included power cable into the power port on the bridge. Plug the other end of the cable into an outlet (Fig. 1).

### 4. Enable Bluetooth

Make sure that Bluetooth is enabled on your phone and permissions have been granted to the Mycurtains app.

### 5. Put Bridge into Pairing Mode

Press and release the button on the back of the bridge for one second using a paper clip (Fig. 2). A solid blue light will turn on while the bridge is in discover mode.

### 6. Connect the Bridge

Scan QR code on back of the bridge by using camera needs camera permissions) or enter code manually (Fig. 3).

### 7. Connect to Wi-Fi

Choose from the list of available Wi-Fi networks to connect the bridge and enter the Wi-Fi password (Fig. 4).

### 8. Learn the Devices

In the app under devices, hit the + sign (Fig. 5).

Pull down and release the Pendant twice on the drapery you want to pair to the bridge. You will see the device pop up in the menu on your Smart Phone screen (Fig 6).

Select the appropriate device, using the “identify” button if needed.

Once the device has been selected, name the device.

Repeat step 8 for all new devices.

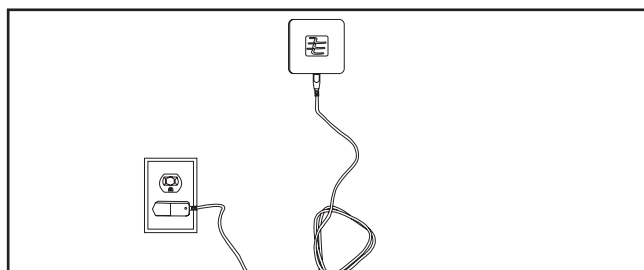


Fig. 1; Plug in the bridge.

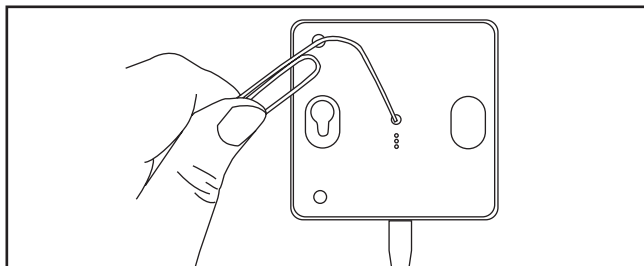


Fig. 2; Press and release the button on the back of the bridge.

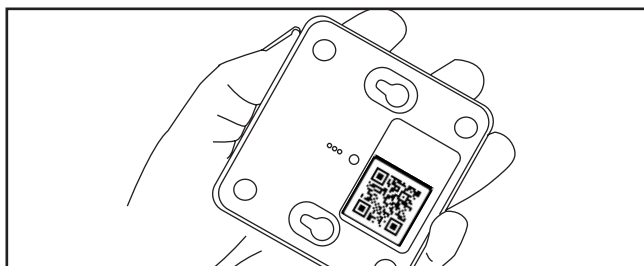


Fig. 3; Scan the QR Code on the bottom of the bridge.

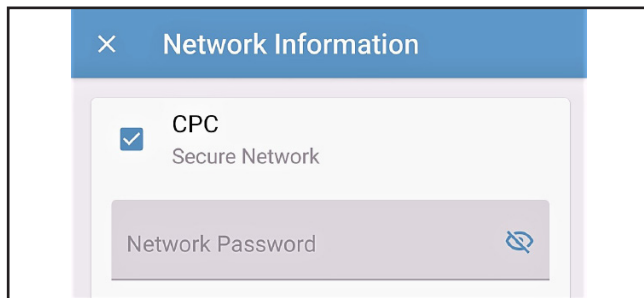


Fig. 4; Connect your bridge to your local wifi.

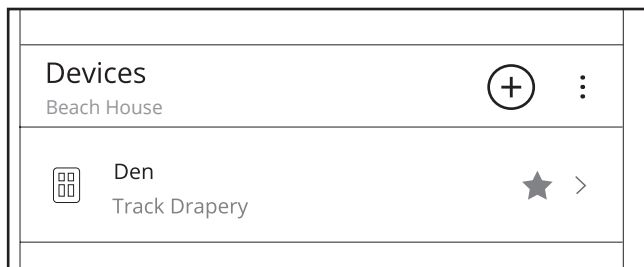


Fig. 5; Hit the + to add a device.

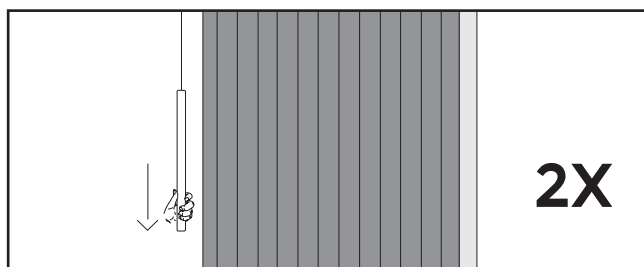


Fig. 6; Pull down and release the pendant twice.

## SETUP WITH THE BRIDGE (NO APP)

### 1. Connect Power to Bridge

Find an outlet in a location central to the drapery you are installing in the home. Insert the micro-usb end of the included power cable into the power port on the bridge. Plug the other end of the cable into an outlet.

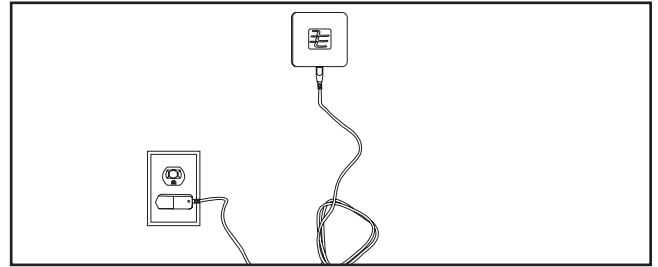


Fig. X; Plug in the bridge.

### 2. Put Bridge into Pairing Mode

Push a tack or pen into the hole in the back of the bridge to depress and hold the recessed button until the blue LED begins to flash .

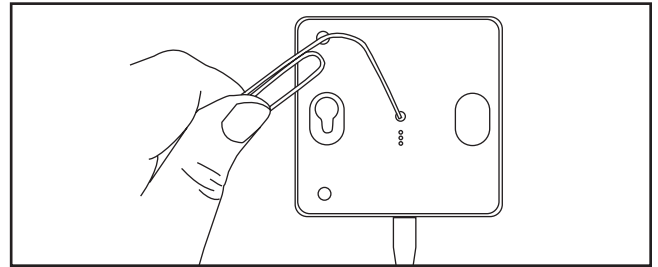


Fig. X; Press and release the button on the back of the bridge.

### 3. Pair Drapery

On any drapery you would like to pair to the bridge pull down and release the Pendant once to start the drapery, then once again to stop it. The green LED on the bridge will flash three times to indicate the drapery has been paired.

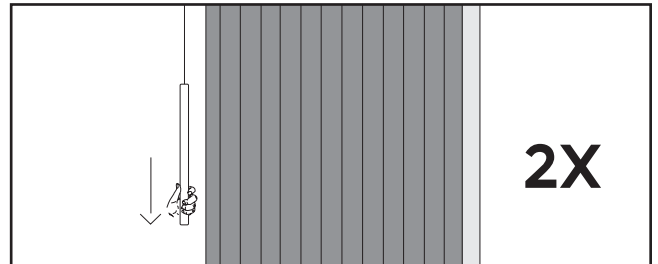


Fig. X; Pull down and release the pendant twice.

## PAIR THE REMOTE TO THE DRAPERY (ZIGBEE)

### 1. Connect Remote to Bridge

If using the Current Products Corp. bridge, use a tack or other object to depress and hold the recessed button on the bottom of the bridge. The LED should flash blue to show it is in pairing mode.

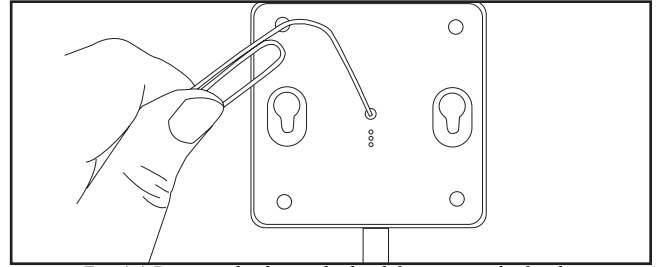


Fig. 1.1 Press and release the back button on the bridge.

Pull the “Pull” tab from the bottom of the remote. Next, push any button on the face of the remote. The LEDs should scroll to show it is seeking a bridge. Then should flash to confirm it has paired to the bridge.

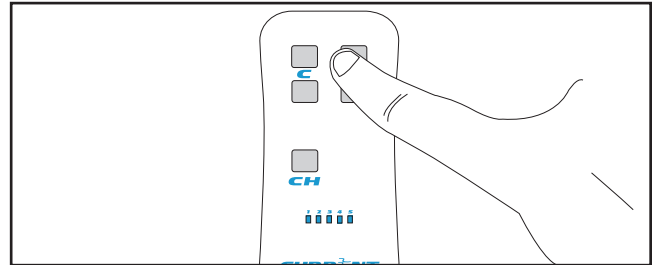


Fig. 1.2 Push any button on the face of the remote.

### 2. Initiate Learn Mode on Drapery

Pull down and release the Pendant twice to enter learn mode.

After the first tug, the drapery should start moving. The second tug should stop it.

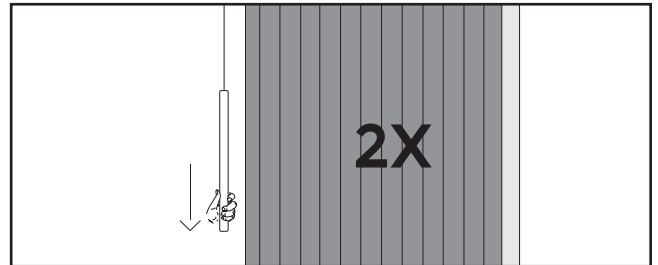


Fig. 2.1 Pull down and release the Pendant twice.

### 3. Connect the Remote to the Drapery

On multi-channel remotes, select the channel you wish to pair to by pressing the Channel button until the LED corresponding with the appropriate channel is lit.

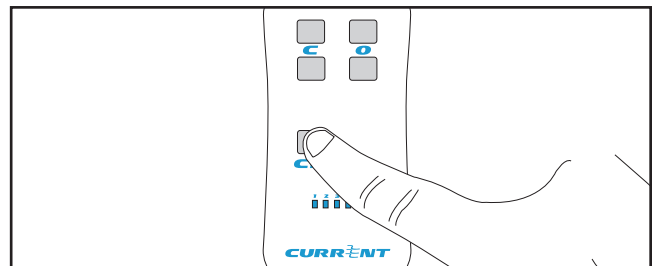


Fig. 3.1 Press the channel button until the desired channel is selected.

Depress the “pairing” button on the back of the remote by pushing a pen or other object through the hole in the back of the remote. The LEDs on the front will scroll.

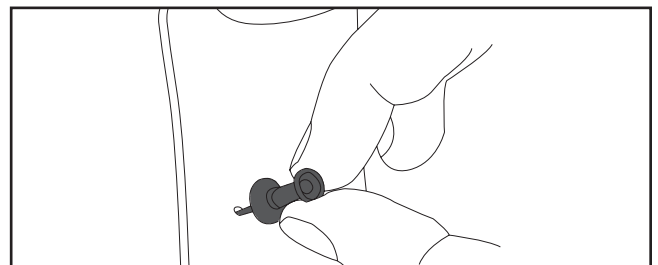


Fig. 3.2 Press and release the back button on the remote.

Press and release the top left button on the remote. The drapery will jog to confirm pairing has been successful.

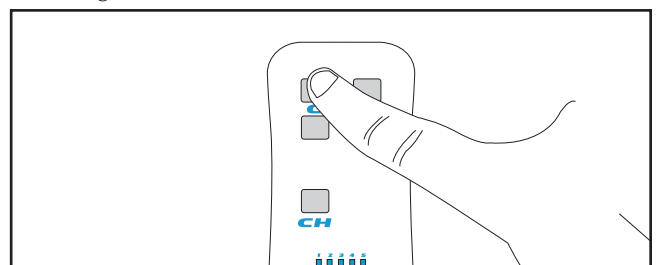


Fig. 3.3 Press and release the top left button to pair.

# INTEGRATE WITH AMAZON ECHO OR ECHO PLUS ZIGBEE USING THE CURRENT PRODUCTS CORP BRIDGE

## 1. Set up your Echo

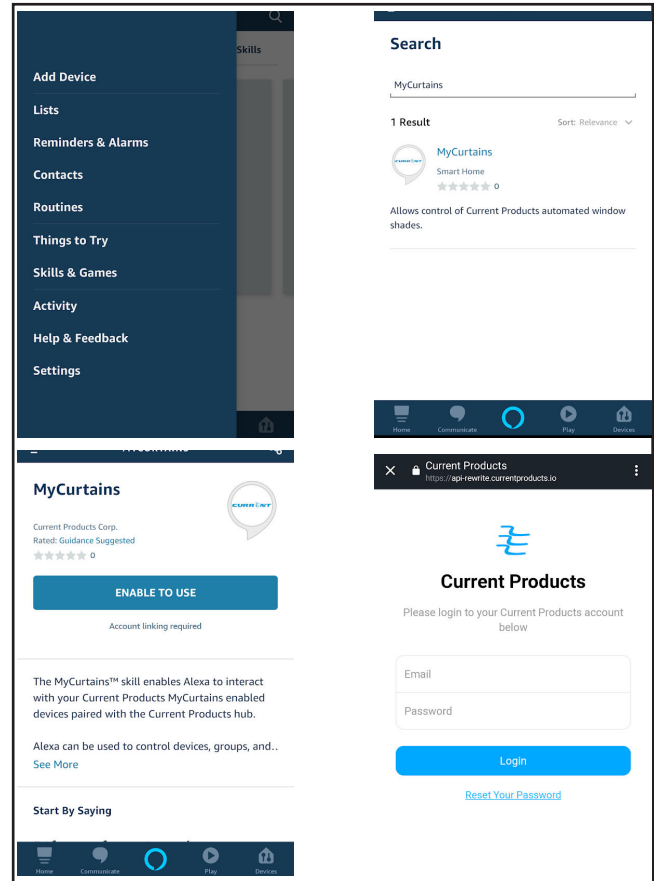
If your Alexa device is not yet set up, do so now by following the instructions that came with your device.

Also be sure the bridge and app have been setup. For instructions on how to set up your bridge and app, go to page 2.

## 2. Download the Skill

On the menu, select “Skills and Games”. Once you are on that page, hit the spyglass icon at the top right hand corner

Search for the skill titled “My Curtains” or “Current Products”. If you want to be able to trigger Alexa using both phrases, be sure to download both skills.



Download the Alexa Skill then sign into the CPC app.

## 3. Sign In

Use the login credentials you created when you first set up your bridge and app. You are now able to control your devices via Amazon Alexa.

## Using Alexa

Trigger Alexa using the trigger word selected when you installed the skill.

Say “Alexa, Open ...” or “Alexa, Move ...”. Use percentages to get your drapery to specific position, or say “open” and “close”.

You can control devices, groups, or trigger scenes through Alexa, and create custom names for each in the MyCurtains app.

# INTEGRATE WITH AMAZON ECHO PLUS- USE ALEXA'S BUILT IN ZIGBEE HUB

## 1. Set up your Echo

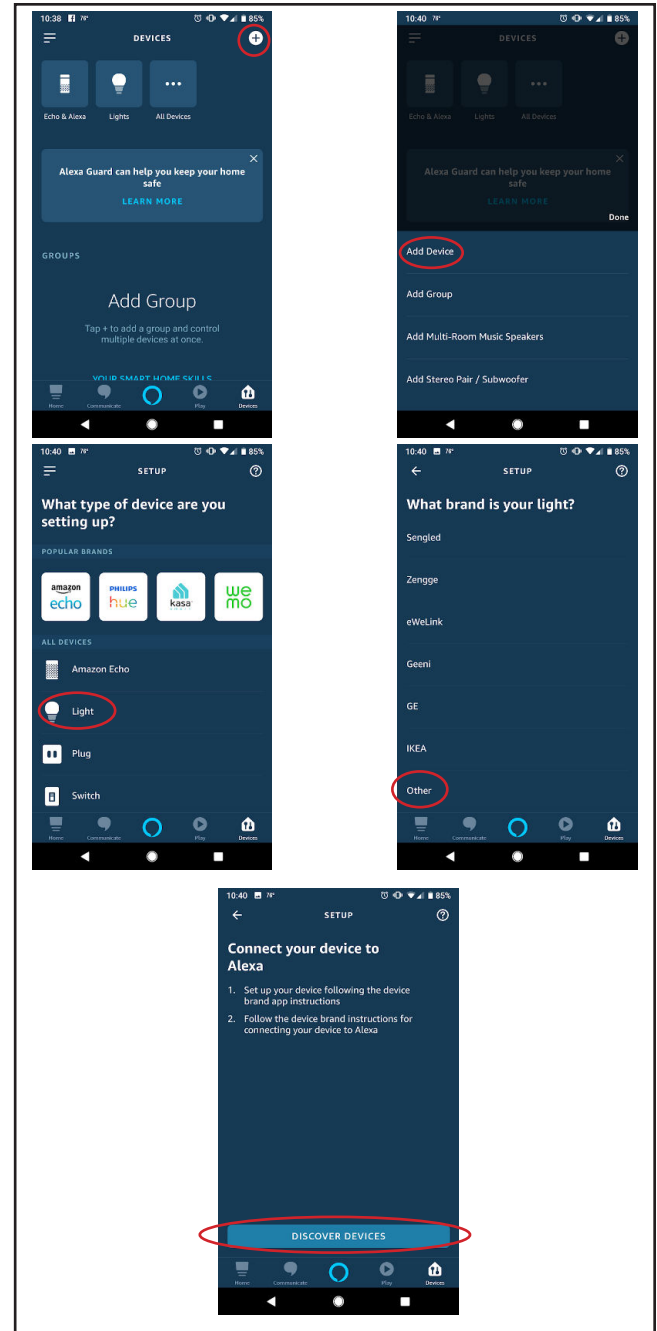
If your Alexa device is not yet set up, do so now by following the instructions that came with your device.

## 2. Add a Device

From the menu in the Alexa app, go to “Devices” and hit the plus sign in the top right hand corner of the screen. Hit “Add Device” on the menu that pops up on the screen. Select “Light” from the menu on the next screen. Scroll down to the bottom of the next screen to select “Other” as the brand, then hit “Discover Devices”.

While Alexa is searching, pull down and release the Pendant twice on each drapery you want to pair to Alexa.

Each drapery you are pairing will show up as a lightbulb.



Alexa App Steps

## 3. Customize in App

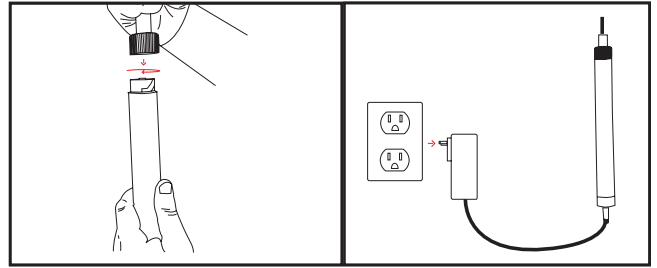
In the Alexa app, you can change the name of each device to better your control of the devices. You can also add custom commands. We suggest custom naming each device, and creating commands for “open” and “close”.

## REMOVE THE DRAPERIES FROM A NETWORK

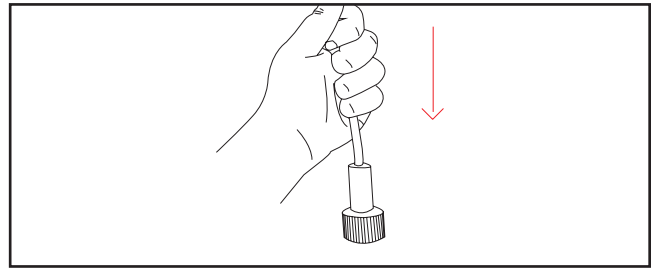
In some instances it may become necessary to remove your drapery from the network. Removing the drapery from the network will remove the drapery from the bridge and you will need to re-add it back to your network before you can use the remote or app.

### 1. Remove Power

Disconnect power from the unit. For hardwired units, simply unplug the device. For battery powered units, remove the battery tube by twisting it off of the connection wire.



With power disconnected, pull down on the Pendant or cord and release once.



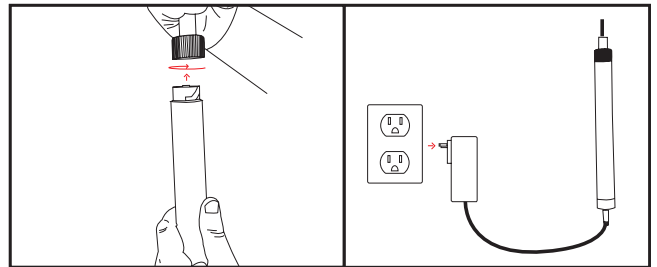
### 2. Setup The Drapery for Reset

Move the curtain(s) to a position halfway between full open and full closed.



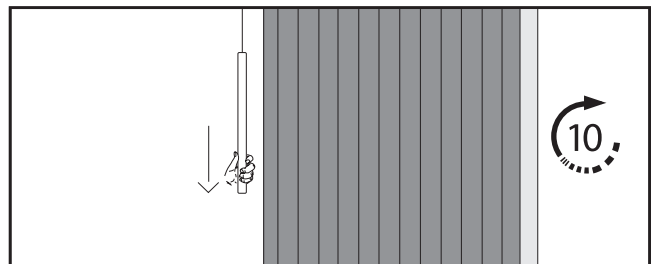
### 3. Reconnect Power

Reconnect power to the unit by plugging the unit back in or by reconnecting the battery tube.



### 3. Perform Master Reset

Pull down on the Pendant and hold for 10 seconds or until the drapery jogs.



Your drapery has now been removed from the network.

# I. INTEGRATE WITH GOOGLE HOME ZIGBEE USING THE CURRENT PRODUCTS CORP BRIDGE

## 1. SET UP YOUR GOOGLE HOME AND CPC BRIDGE

If your Google Home device is not yet set up, do so now by following the instructions that came with your device.

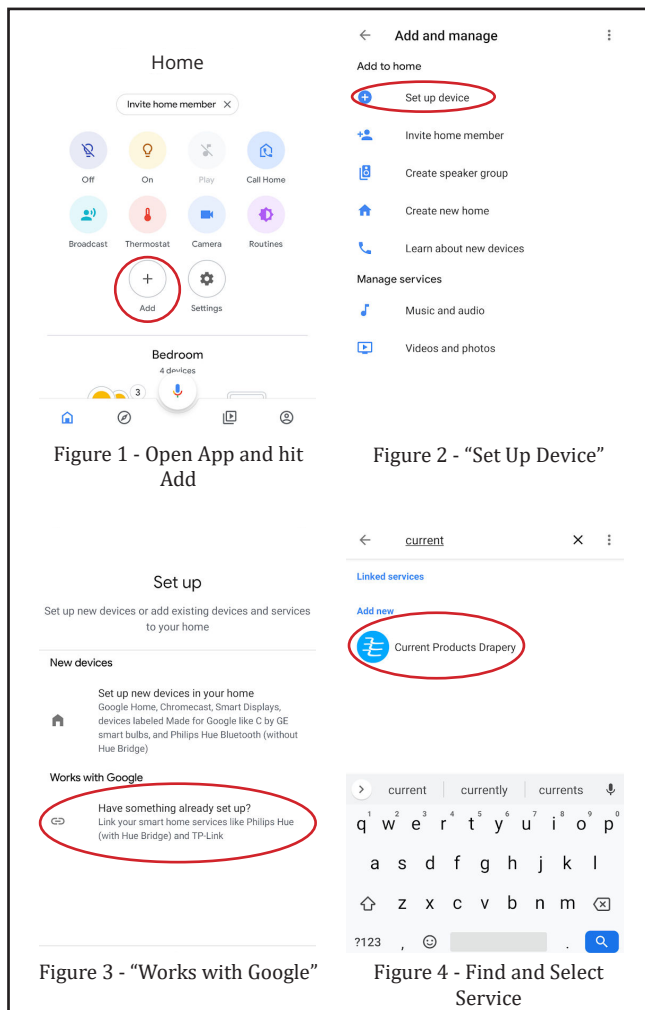
Also be sure the bridge and app have been setup. For instructions on how to set up your bridge and app, see the Bridge Set Up Guide.

## 2. SET UP DEVICE

Open the Google Home app on your smart device and navigate to the correct “home” (some users may have multiple homes connected to one account).

Press the “Add” button, then “Set Up Device”, then “Works with Google”. Use the search function to locate “Current Products Drapery”.

See Figures 1-4.





# I. INTEGRATE WITH AMAZON ECHO OR ECHO PLUS ZIGBEE USING THE CURRENT PRODUCTS CORP BRIDGE

## 1. SET UP YOUR ECHO OR ECHO PLUS AND CPC BRIDGE

If your Alexa device is not yet set up, do so now by following the instructions that came with your device.

Also be sure the bridge and app have been setup. For instructions on how to set up your bridge and app, see the Bridge Set Up Guide.

## 2. DOWNLOAD THE SKILL

In the Alexa app menu, select “Skills and Games.” Once you are on that page, hit the spyglass icon at the top right hand corner.

Search for the skill title “MyCurtains” or “Current Products.” If you want to be able to trigger Alexa using both phrases, be sure to download both skills.

See Figure 23.

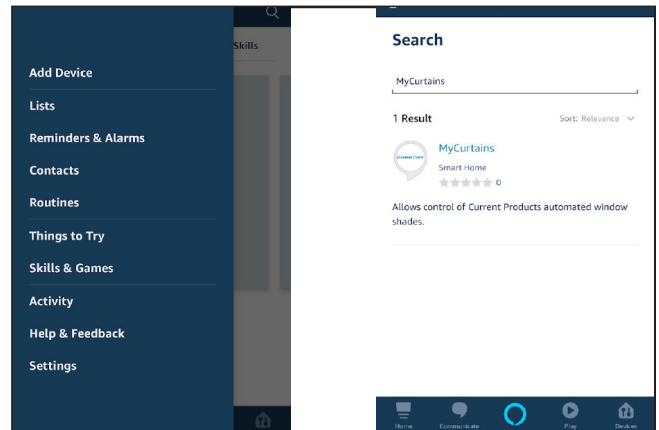


Figure 23 - Download the Alexa Skill

## 3. SIGN IN

Use the login credentials you created when you first set up your bridge and app. You are now able to control your devices via Amazon Alexa. See Figure 24.

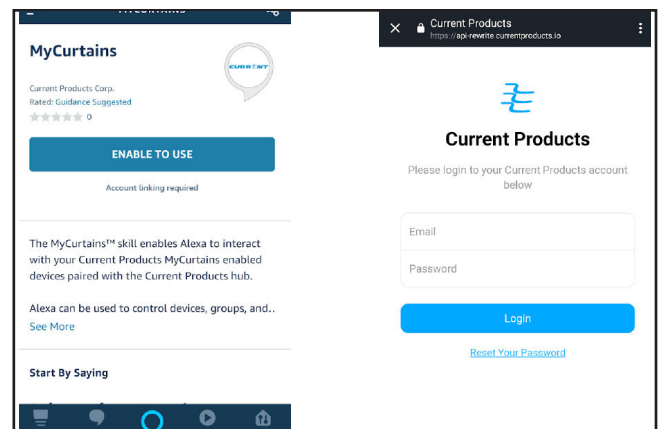


Figure 24 - Sign into the CPC app

## 4. USING ALEXA

Trigger Alexa using the trigger word selected when you installed the skill.

Say “Alexa, Open or Close ...”. Use percentages to get your drapery to specific position, or say “open” and “close.”

You can control devices, groups, or trigger scenes through Alexa, and create custom names for each in the MyCurtains app.

# I. INTEGRATE WITH AMAZON ECHO PLUS- USE ALEXA'S BUILT IN ZIGBEE HUB

## 1. SET UP YOUR ECHO PLUS

If your Alexa device is not yet set up, do so now by following the instructions that came with your device.

## 2. ADD A DEVICE

From the menu in the Alexa app, go to “Devices” and hit the “+” in the top right hand corner of the screen. Hit “Add Device” on the menu that pops up on the screen. Select “Light” from the menu on the next screen. Scroll down to the bottom of the next screen to select “Other” as the brand, then hit “Discover Devices.”

While Alexa is searching, pull down and release the Pendant twice on each drapery you want to pair to Alexa.

Each drapery you are pairing will show up as a lightbulb.

## 3. CUSTOMIZE IN APP

In the Alexa app, you can change the name of each device to better your control of the devices. You can also add custom commands. We suggest custom naming each device, and creating commands for “open” and “close”.

See Figure 25 for all integration steps.

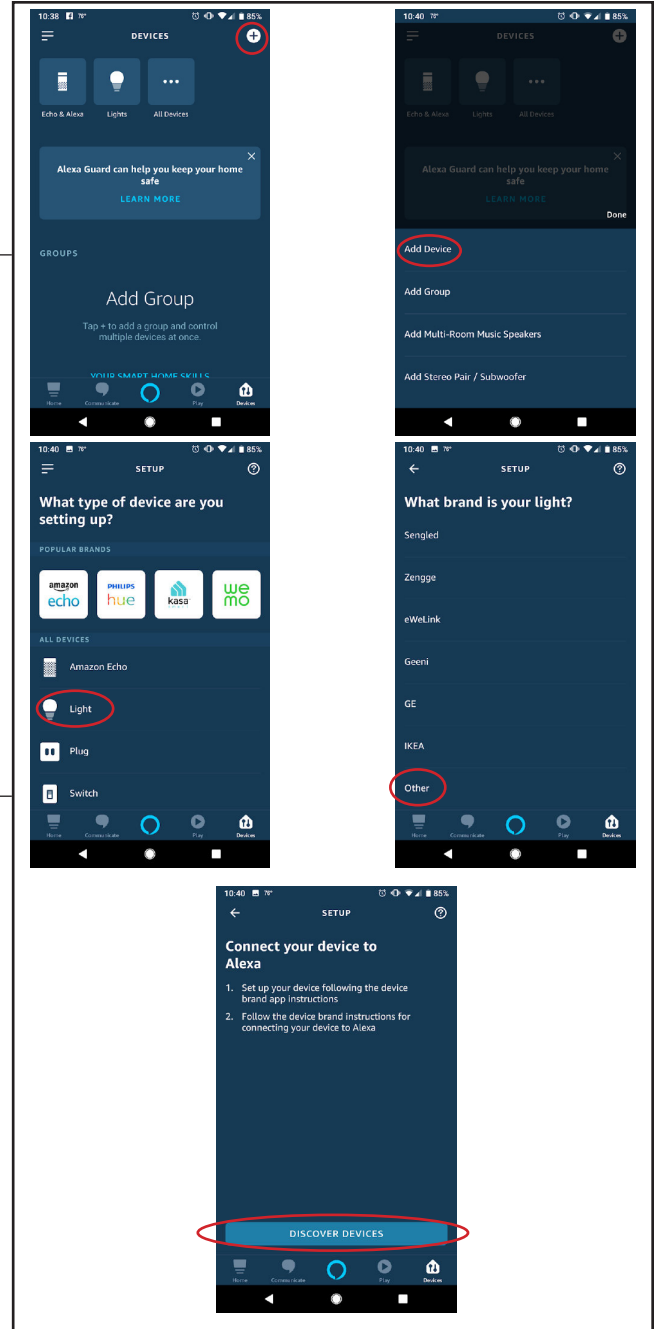


Figure 25 - Alexa App Steps

## I. CHANGE POSITIONS ON THE DRAPERY TRACK (SINGLE)

For additional help during installation of your drapery track, visit [www.currentproductscorp.com/support/drapery-track](http://www.currentproductscorp.com/support/drapery-track) or call 1-844-307-7435.

### CHANGE THE OPEN POSITION

#### 1. ENTER LEARN OPEN POSITION MODE

Pull down and release the Pendant so the drapery moves towards the direction you would like to set as the “open” position. See Figure 1.

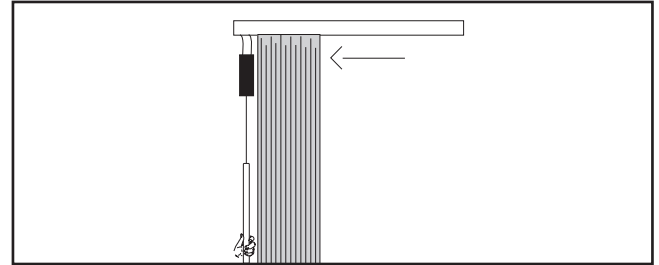


Figure 1 - Pull down and release the Pendant

After the drapery reaches its current open position, it will stop moving. Pull down and hold the Pendant for five seconds, or until the drapery jogs. Then Release the Pendant. See Figure 2.

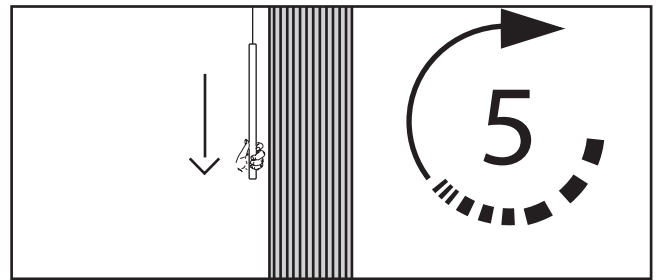


Figure 2 - Pull down and hold the Pendant for 5 seconds, then release

#### 2. SET THE OPEN POSITION

By hand, pull the drapery until it reaches the desired open position. See Figure 3.

Note: If you have a remote control paired to the device, you can use it to move the curtain into the desired full open position. A press and release will move the drapery half an inch in a direction while a press and hold will move the drapery continuously.

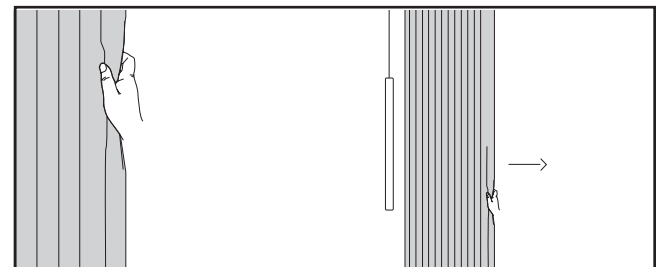


Figure 3 - Pull the drapery by hand to the desired full open position

#### 3. EXIT LEARN OPEN POSITION MODE

Pull down and release the Pendant once to exit learn mode. The drapery will jog to confirm it has learned this position. See Figure 4.

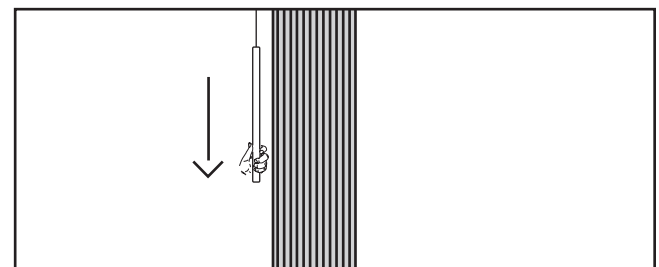


Figure 4 - Pull down and release the Pendant

---

## CHANGE THE CLOSE POSITION

### 1. ENTER LEARN CLOSE POSITION MODE

Pull down and release the Pendant so the drapery moves towards the direction you would like to set as the “close” position. See Figure 5.

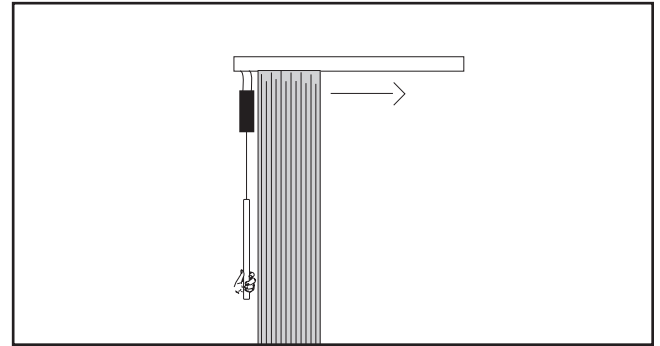


Figure 5 - Pull down and release the Pendant to close drapery

After the drapery reaches the position, it will stop moving. Pull down and hold the Pendant for five seconds, or until the drapery jogs. See Figure 6.

Release the Pendant.

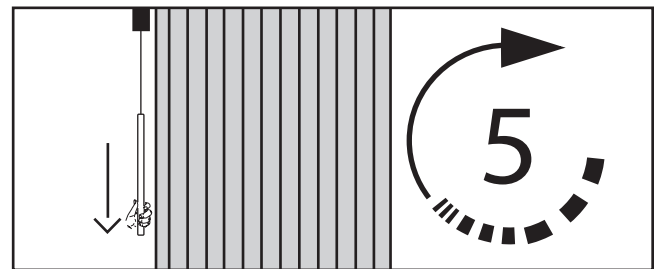


Figure 6 - Pull down and hold the Pendant for 5 seconds, then release

---

### 2. SET THE CLOSE POSITION

By hand, pull the drapery until it reaches the desired close position. See Figure 7.

Note: If you have a remote control paired to the device, you can use it to move the curtain into the desired close position. A press and release will move the drapery half an inch in a direction while a press and hold will move the drapery continuously.

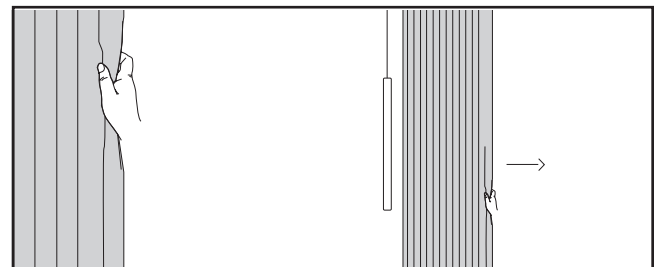


Figure 7 - Pull the drapery by hand to the desired full close position

---

### 3. EXIT LEARN CLOSE POSITION MODE

Pull down and release the Pendant once to exit learn mode. The drapery will jog to confirm it has learned this position. See Figure 8.

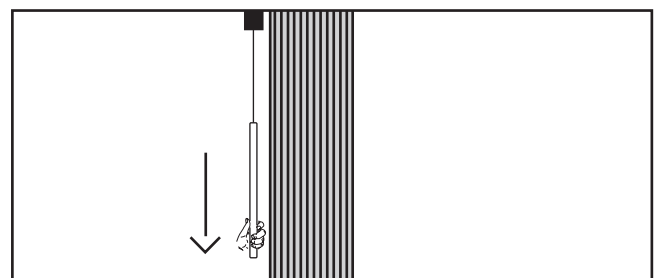


Figure 8 - Pull down and release the Pendant

## II. CHANGE POSITIONS ON THE DRAPERY TRACK (DUAL)

### CHANGE THE OPEN POSITION FOR THE ROOM SIDE DRAPERIES (MOTOR I)

#### 1. ENTER LEARN OPEN POSITION MODE

Pull down and release the Pendant so the room side drapery moves towards the direction you would like to set as the “open” position. See Figure 9.

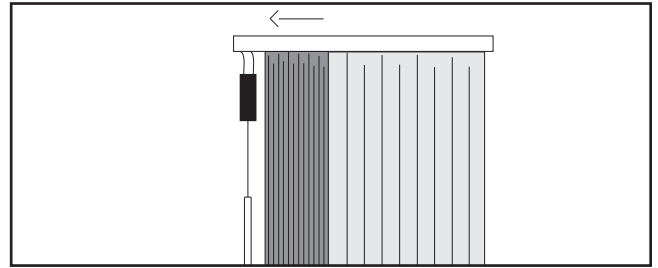


Figure 9 - Pull down Pendant to move room side drapery to open position

After the drapery reaches the position, it will stop moving. Pull down and hold the Pendant for five seconds, or until the drapery jogs. Then release the Pendant. See Figure 10.

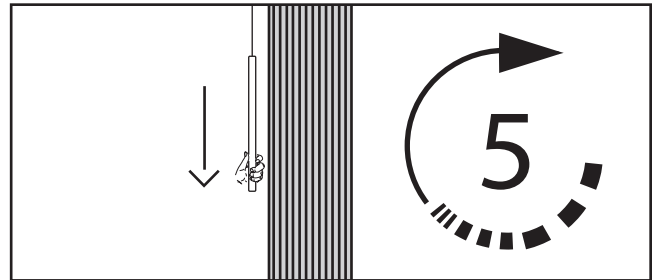


Figure 10 - Pull down and hold the Pendant for 5 seconds, then release

#### 2. SET THE OPEN POSITION

By hand, pull the curtain until it reaches the desired open position. See Figure 11.

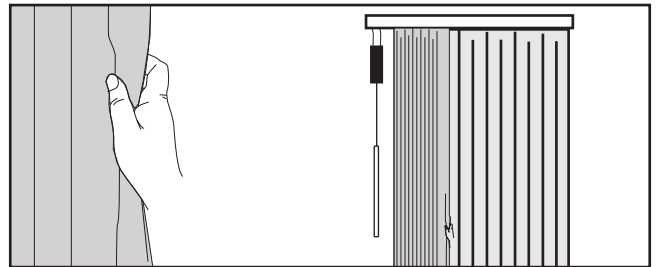


Figure 11 - Pull the drapery by hand to the desired full open position

#### 3. EXIT LEARN POSITION MODE

Pull down and release the Pendant once to exit learn mode. The drapery will jog to confirm it has learned this position. See Figure 12.

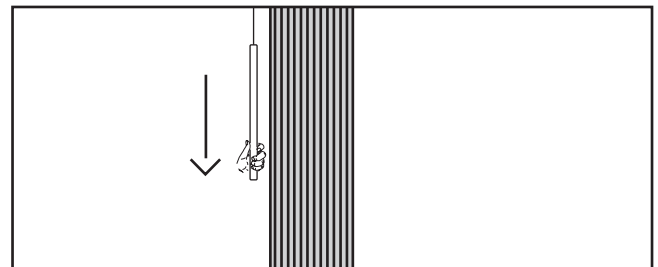


Figure 12 - Pull down and release the Pendant

---

## CHANGE THE CLOSE POSITION FOR THE ROOM SIDE DRAPERIES (MOTOR I)

### 1. ENTER LEARN CLOSE POSITION MODE

Pull down and release the Pendant so the drapery moves towards the direction you would like to set as the “close” position. See Figure 13.

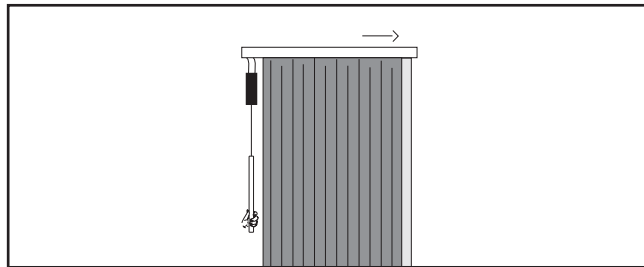


Figure 13 - Pull down Pendant to move room side drapery to closed position

After the drapery reaches the position, it will stop moving. Pull down and hold the Pendant for five seconds, or until the drapery jogs. Then release the Pendant. See Figure 14.

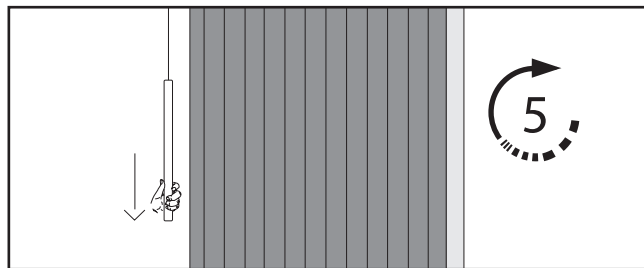


Figure 14 - Pull down and hold the Pendant for 5 seconds, then release

---

### 2. SET THE CLOSE POSITION

By hand, pull the curtain until it reaches the desired close position. See Figure 15.

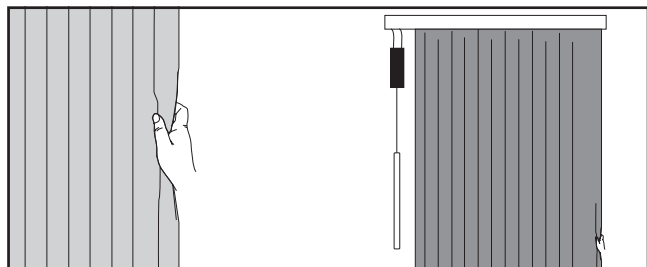


Figure 15 - Pull the drapery by hand to the desired full closed position

---

### 3. EXIT LEARN CLOSE POSITION MODE

Pull down and release the Pendant once to exit learn mode. The drapery will jog to confirm it has learned this position. See Figure 16.

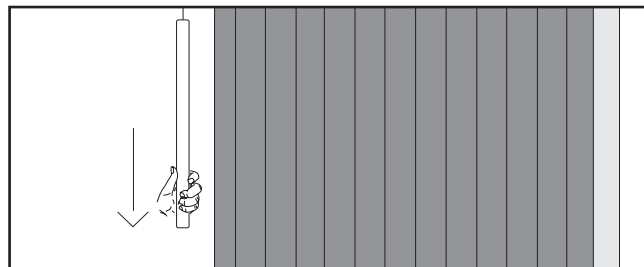


Figure 16 - Pull down and release the Pendant

## CHANGE THE OPEN POSITION FOR THE WINDOW SIDE DRAPERY (MOTOR 2)

### 1. ENTER LEARN OPEN POSITION MODE

Lift up and release the Pendant so the drapery moves towards the direction you would like to set as the “open” position. See Figure 17.

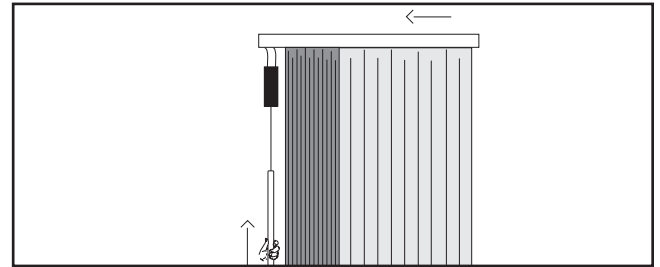


Figure 17 - Lift up and release Pendant to move drapery to open position

After the drapery reaches the position, it will stop moving. Lift up and hold the Pendant for five seconds, or until the drapery jogs. Then release the Pendant. See Figure 18.

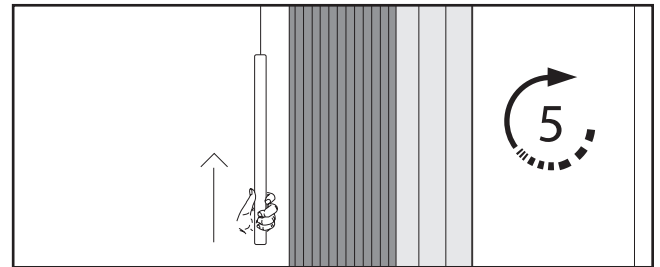


Figure 18 - Lift up and hold Pendant for 5 seconds, then release

### 2. SET THE OPEN POSITION

By hand, pull the drapery until it reaches the desired full open position. See Figure 19.

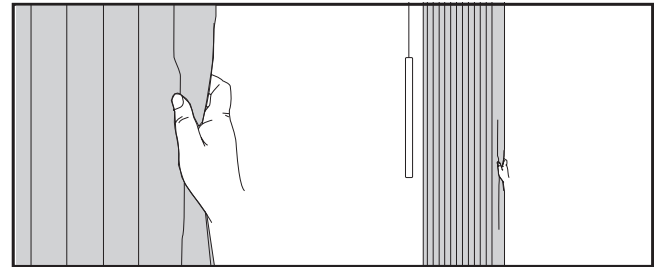


Figure 19 - Pull the drapery to full open position

### 3. EXIT LEARN OPEN POSITION MODE

Lift up and release the Pendant once to exit learn mode. The drapery will jog to confirm it has learned this position. See Figure 20.

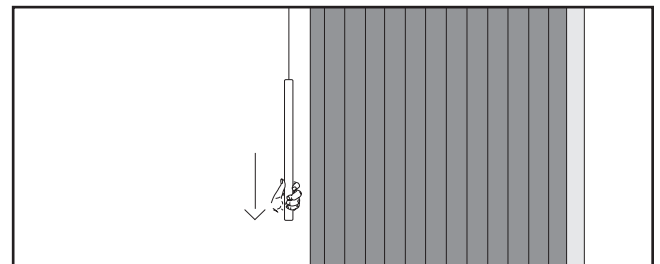


Figure 20 - Pull down and release Pendant

## CHANGE THE CLOSE POSITION FOR THE WINDOW SIDE DRAPERY (MOTOR 2)

### 1. ENTER LEARN CLOSE POSITION MODE

Lift up and release the Pendant so the drapery moves towards the direction you would like to set as the “close” position. See Figure 21.

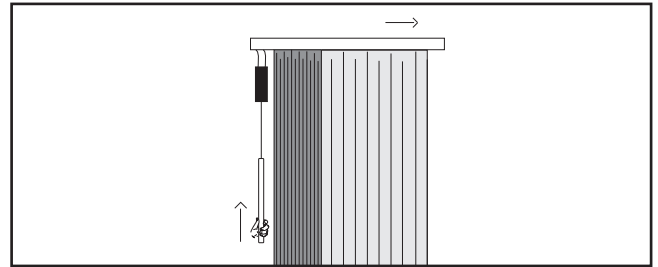


Figure 21 - Lift up and release Pendant to move drapery to closed position

After the drapery reaches the position, it will stop moving. Lift up and hold the Pendant for five seconds, or until the drapery jogs. See Figure 22.

Release the Pendant.

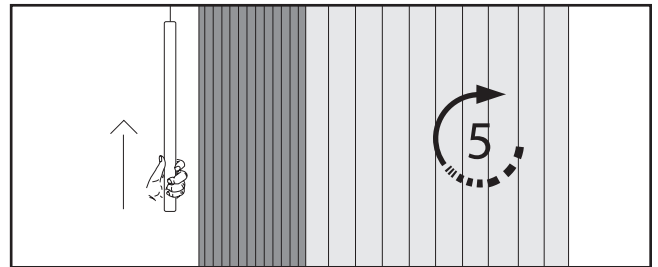


Figure 22 - Lift up and hold Pendant for 5 seconds, then release

### 2. SET THE CLOSE POSITION

By hand, pull the drapery until it reaches the desired full close position. See Figure 23.

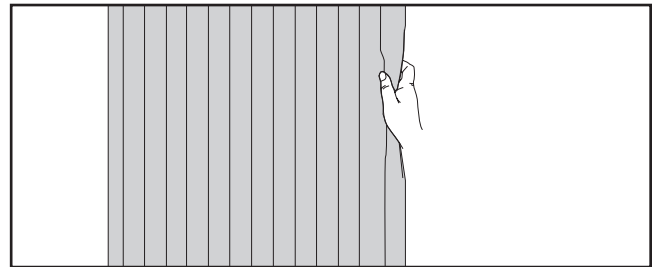


Figure 23 - Pull drapery to full closed position

### 3. EXIT LEARN CLOSE POSITION MODE

Lift up and release the Pendant once to exit learn mode. The drapery will jog to confirm it has learned this position. See Figure 24.

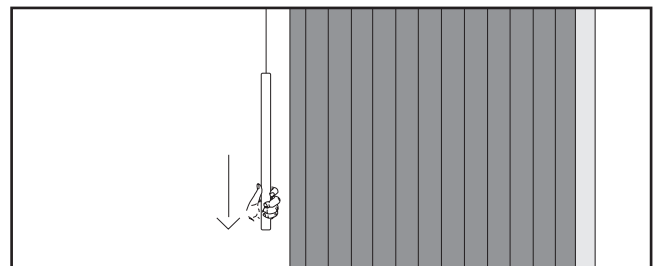


Figure 24 - Pull down and release Pendant



### III. PAIR THE REMOTE TO THE DRAPERLY (FM)

#### 1. INITIATE LEARN MODE

Pull down and release the Pendant twice to enter learn mode. After the first tug, the drapery should start moving. The second tug should stop it. See Figure 25.

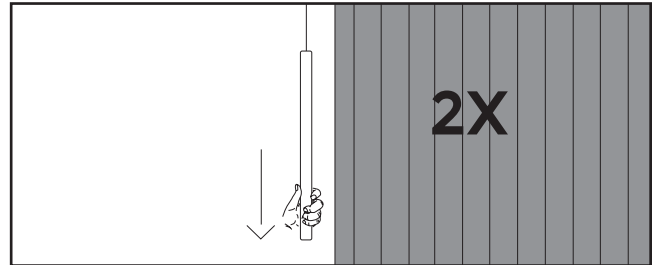


Figure 25 - Pull down and release Pendant

#### 2. CONNECT THE REMOTE

On multi-channel remotes, select the channel you wish to pair to by pressing the Channel button until the LED corresponding with the appropriate channel is lit. See Figure 26.

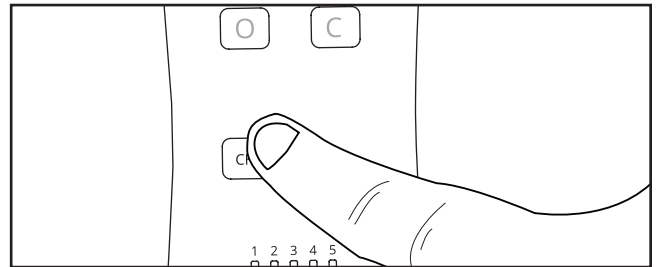


Figure 26 - Select channel by pressing channel button

Depress the “pairing” button on the back of the remote by pushing a pen or other object through the hole in the back of the remote. The LEDs on the front will scroll. See Figure 27.

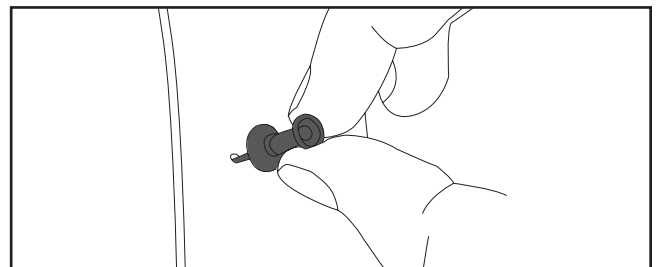


Figure 27 - Depress pairing button on back of remote

Press and release the top left button on the remote. The drapery will jog to confirm pairing has been successful. See Figure 28.

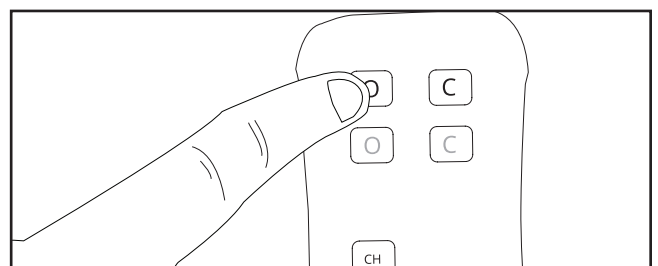


Figure 28 - Press and release top left button on remote

## IV. ENABLE OR DISABLE SMART ASSIST

Smart Assist allows users to pull the curtain manually and have the movement complete automatically. All drapery tracks come with Smart Assist enabled.

### 1. MANUALLY MOVE THE DRAPERY

Begin with the drapery in the full open or full closed position. Manually move the drapery more than a foot towards the opposite direction. If Smart Assist is enabled, the drapery will begin to complete the movement automatically. If Smart Assist is disabled, the drapery will remain in place. See Figure 29.

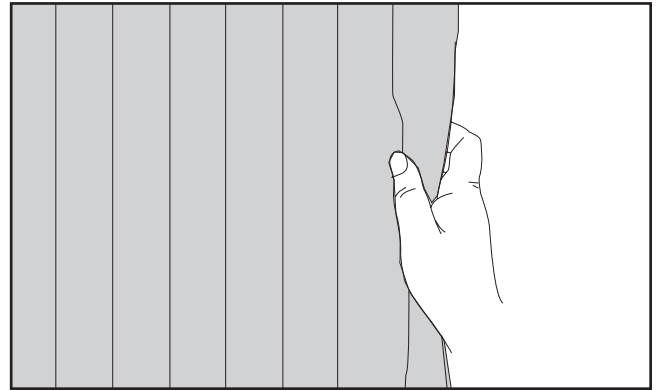


Figure 29 - Manually move the drapery one foot

### 2. ENABLE OR DISABLE SMART ASSIST

**To disable Smart Assist** pull down and hold the Pendant for five seconds or until the drapery jogs, then release. Be sure to pull down on the Pendant before the drapery reaches its limit. See Figure 30.

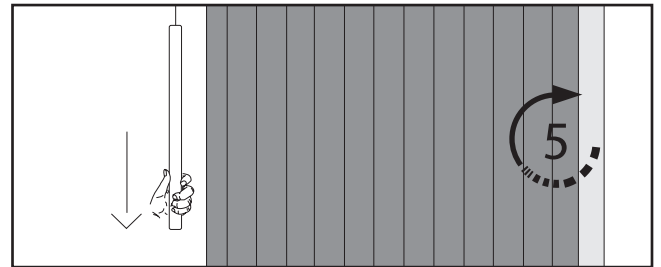


Figure 30 - Pull down and hold Pendant for 5 seconds

**To enable Smart Assist**, pull down on the Pendant for five seconds or until the drapery jogs, then release. See Figure 31.

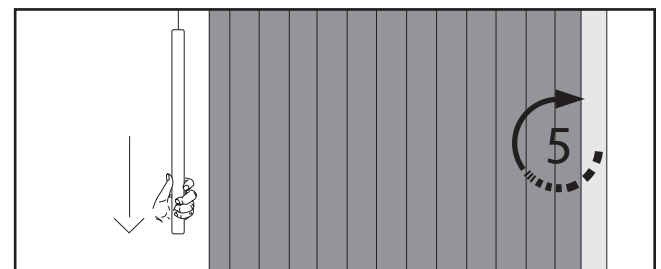


Figure 31 - Pull down and hold Pendant for 5 seconds

### 3. CONFIRM

Pull down and release the Pendant once to confirm. The drapery will jog to confirm Smart Assist has been enabled or disabled. See Figure 32.

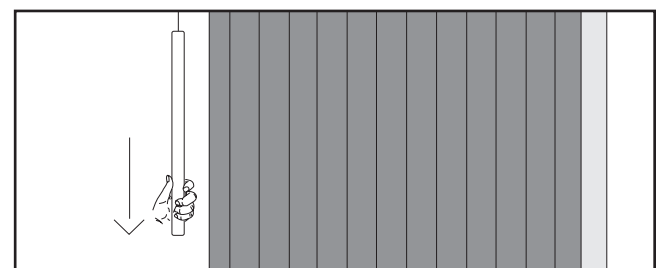


Figure 32 - Pull down and release Pendant once

## V. GROUPING MULTIPLE DRAPERY TOGETHER

The grouping feature is available on all units with a sensor box. Grouping allows users to control multiple units simultaneously with one manual command. Grouping also allows units to move together simultaneously when any one unit in the group has a sensor automated command triggered.

### 1. ENTER PAIRING MODE

On each drapery you would like to group, press and hold all three buttons on the sensor box until all three LEDs flash green. See Figure 33.

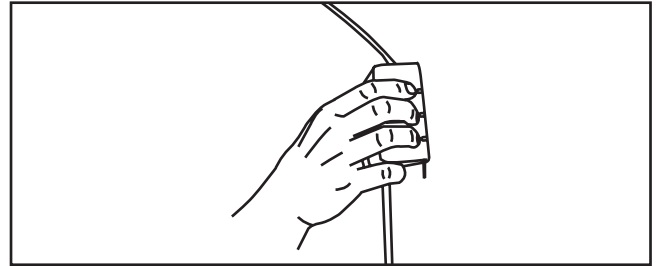


Figure 33 - Press and hold all 3 buttons

---

### 2. CONFIRM GROUPING

On a central unit you would like to designate as the 'Master', press and hold all three buttons on the sensor box until all three LEDs flash green. See Figure 34.

Each drapery will jog to confirm it has been successfully grouped.

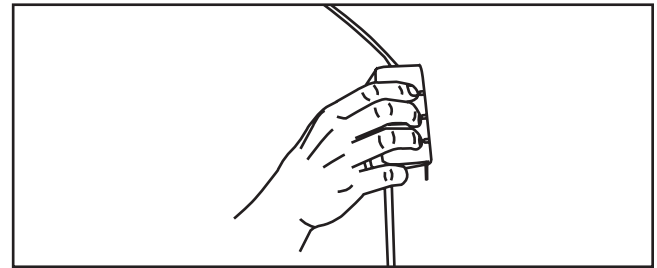


Figure 34 - Press and hold all 3 buttons

## VI. MASTER RESET THE DRAPERY

In some instances it may become necessary to master reset your drapery. Performing a master reset will restore the drapery to its factory settings, erasing saved open and closed positions, groups, and all paired remotes.

### 1. REMOVE POWER

Disconnect power from the unit. For hardwired units, simply unplug the device. For battery powered units, remove the battery tube by twisting it off of the connection wire. See Figure 35.

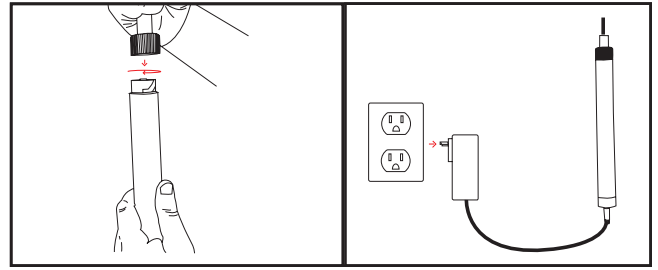


Figure 35 - Disconnect power

With power disconnected, pull down on the Pendant or cord and release once. See Figure 36.

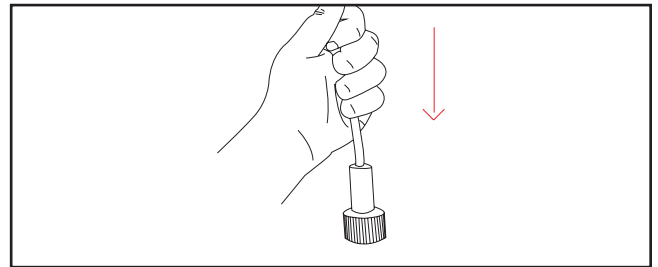


Figure 36 - Pull down on Pendant or cord and release once

### 2. SETUP THE DRAPERY FOR RESET

Move the drapery to a position halfway between full open and full closed. See Figure 37.



Figure 37 - Move drapery to halfway between full open and full closed

### 3. RECONNECT POWER

Reconnect power to the unit by plugging the unit back in or by reconnecting the battery tube. See Figure 38.

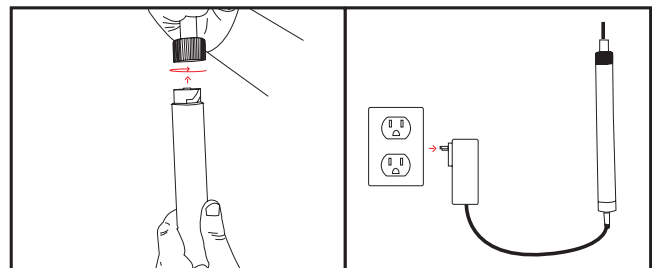


Figure 38 - Reconnect power

### 4. PERFORM MASTER RESET

Pull down on the Pendant and hold for 10 seconds or until the drapery jogs.

Next, push up on the Pendant for 10 seconds or until the drapery jogs. See Figure 39.

Your drapery has now been master reset.

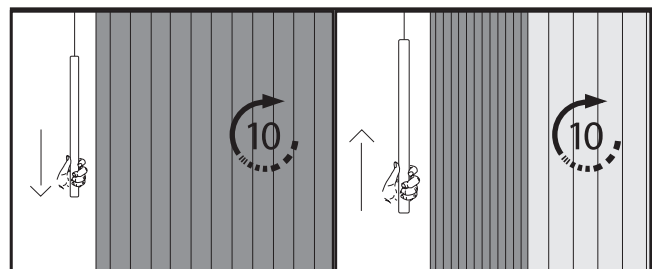


Figure 39 - Pull down and hold Pendant and lift up and hold Pendant

## VII. STATEMENTS

### FCC STATEMENT

This device complies with Part 15 of the FCC Rules. Operation is subject to the following two conditions:

1. This device may not cause harmful interference, and
2. This device must accept any interference received, including interference that may cause undesired operation.

**Warning:** Changes or modifications not expressly approved by Current Products Co. could void the user's authority to operate the equipment.

**NOTE:** This equipment has been tested and found to comply with the limits for a Class B digital device, pursuant to Part 15 of the FCC Rules. These limits are designed to provide reasonable protection against harmful interference in a residential installation. This equipment generates, uses, and can radiate radio frequency energy and, if not installed and used in accordance with the instructions, may cause harmful interference to radio communications. However, there is no guarantee that interference will not occur in a particular installation. If this equipment does cause harmful interference to radio or television reception, which can be determined by turning the equipment off and on, the user is encouraged to try to correct the interference by one or more of the following measures:

- Reorient or relocate the receiving antenna.
- Increase the separation between the equipment and receiver.
- Connect the equipment into an outlet on a circuit different from that to which the receiver is connected.
- Consult the dealer or an experienced radio/TV technician for help.

### RF WARNING STATEMENT

This equipment complies with FCC/ISED radiation exposure limits set forth for an uncontrolled environment. This equipment should be installed and operated to provide a separation distance of at least 20 cm from all persons.

Cet équipement est conforme aux limites d'exposition au rayonnement FCC / ISED établies pour un environnement non contrôlé. Cet équipement doit être installé et utilisé de manière à assurer une distance de séparation d'au moins 20 cm de toutes les personnes.

### IC STATEMENT

This device complies with Industry Canada license-exempt RSS standard(s). Operation is subject to the following two conditions: (1) this device may not cause interference, and (2) this device must accept any interference, including interference that may cause undesired operation of the device.

Le présent appareil est conforme aux CNR d'Industrie Canada applicables aux appareils radio exempts de licence. L'exploitation est autorisée aux deux conditions suivantes: (1) l'appareil ne doit pas produire de brouillage, et (2) l'utilisateur de l'appareil doit accepter tout brouillage radioélectrique subi, même si le brouillage est susceptible d'en compromettre le fonctionnement.

**CURRENT**  
*Luxury*

**844-307-7435**  
**service@currentluxury.com**

**[www.currentluxury.com](http://www.currentluxury.com)**